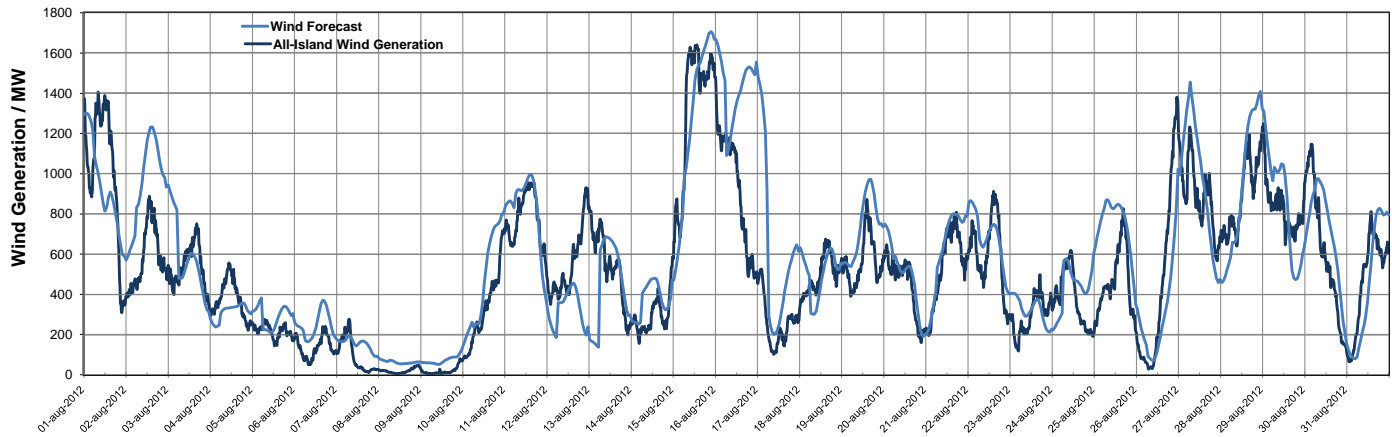


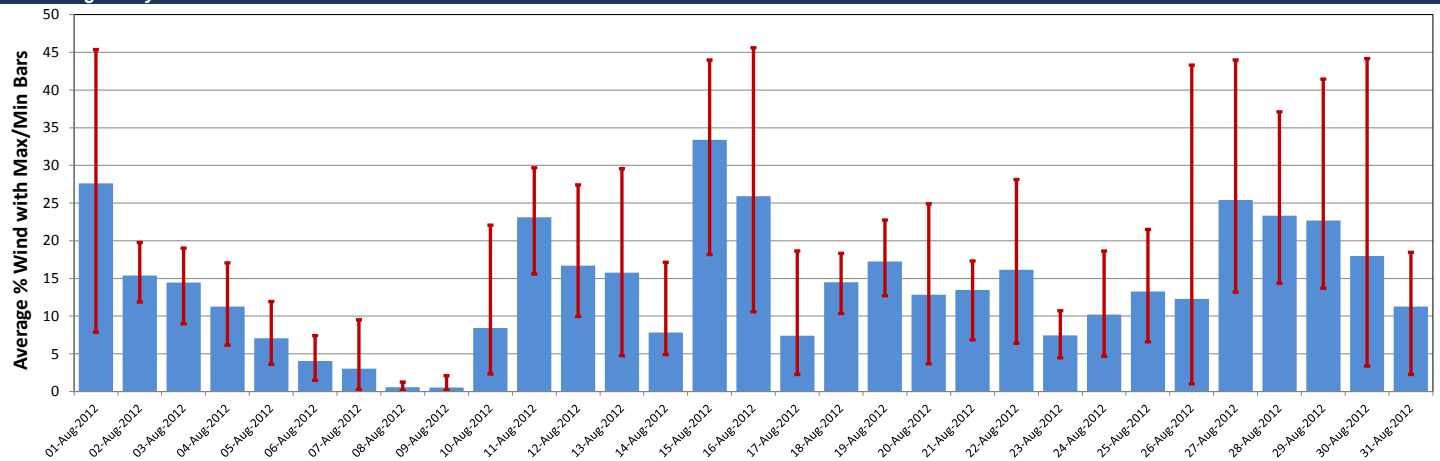
## ▼ System Data ▼

TSO	Installed Wind Capacity (MW)	Wind (MW)			Wind GWhrs	Monthly Wind Capacity Factor %	Demand* (MW)			Total GWhrs	Wind Penetration %			SNSP Max	Avg Abs Forecast Error
		Max	Min	Avg			Max	Min	Avg		Max	Min	Avg		
EirGrid	1637	1304	5	418	311	25.5	3626	1747	2783	2071	49.6	0.2	15.4		
SONI	451	377	0	95	71	21.1	1304	550	926	689	50.0	0.0	10.8		
All-Island	2088	1640	6	513	381	24.6	4869	2320	3709	2760	45.6	0.1	14.2	50.0	7.52%

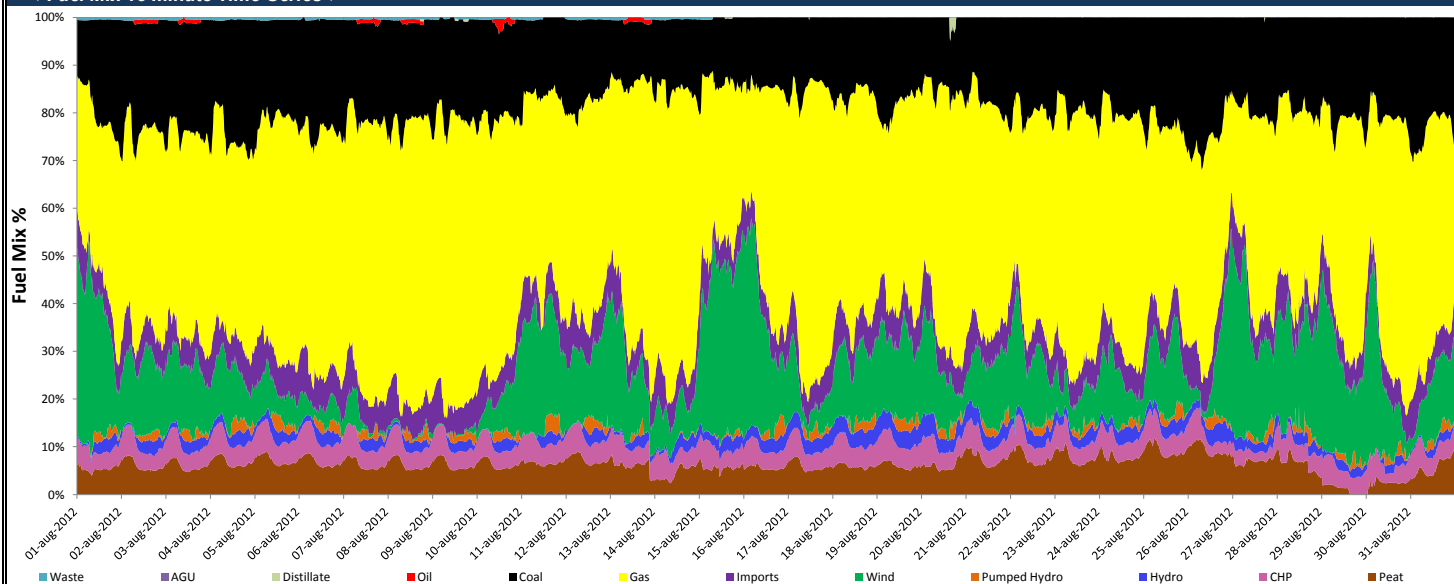
## ▼ All-Island Wind Generation and Forecast Wind ▼



## ▼ Average Daily Wind Penetration ▼



## ▼ Fuel Mix 15 minute Time-Series ▼



## ▼ General Information / Notes ▼

\*Demand Data is based on Export plus Generation House Load

System Data is based on 15-minute SCADA data

Installed Wind MW based on SCADA and Registered data

The maximum wind generation in the different jurisdictions does not necessarily occur at the same time

SNSP - System Non-Synchronous Penetration is the sum of Wind generation and HVDC imports as a percentage of total generation

While every effort has been made in the compilation of this report to ensure that the information herein is correct we cannot accept any responsibility or liability for any damage howsoever caused by reliance on the information presented here.