

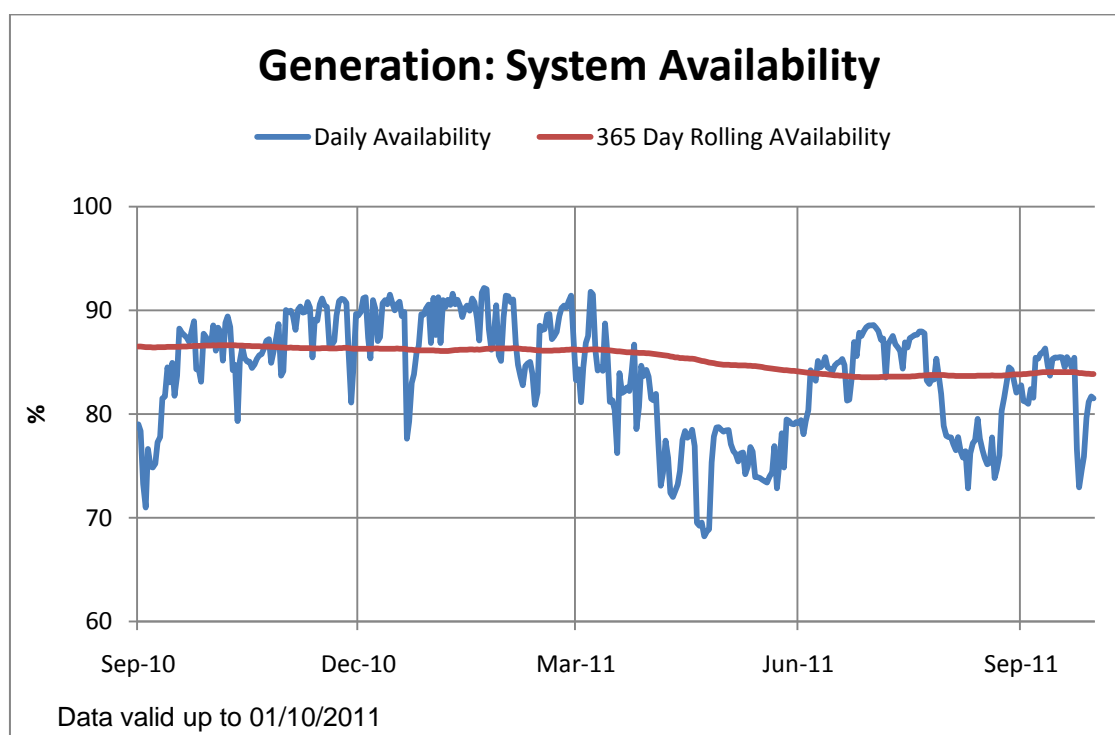


EirGrid Monthly Availability Report – September 2011

This report, for September 2011, details the availability performance of the centrally-dispatched generation units on the power system and includes an outlook for plant availability over the period from October to December 2011.

Key Points:

- The forced outage rate decreased from 8.6% in August to 6.9% in September.
- The monthly system availability increased from 78.1% in August to 82.7% in September. The main scheduled outages were at Erne ER2 & ER3, Marina MRC, Poolbeg PB5 & PB6, Liffey LI2 and Tarbert TB4. The main forced outages were at Liffey LI1, Sealrock SK3 and West Offaly WOP. There are also long-term outages at North Wall NWC and Turlough Hill station.
- The rolling 365 day rolling availability increased from 83.8% in August to 83.9% in September.



Definitions

Availability: the capacity-weighted percentage of the time from 00:00 1st September to 00:00 1st October that generators were available.

Forced: outages where generators are unavailable due to unforeseen/unplanned outages.

Scheduled: outages where generators are unavailable due to planned reasons, e.g., for maintenance.

Ambient (seasonal derating): difference between the **Maximum Capacity** of a generator and the **Dependable Capacity** over a specified period of time.

Maximum Capacity: the maximum capacity that a unit can sustain over a specified period of time.

Dependable Capacity: the capacity of a unit, when modified for ambient conditions over a specified period of time.

365-day Rolling Availability: the average of the unit's **Availability** over the most recent 365 days (i.e., past year)

HOW TO CONTACT US

General Queries

Tel: +353 1 23 70000

Email: info@eirgrid.com

Power System Operational Planning

Tel: +353 1 23 70446

Email: PSOP@eirgrid.com

www.eirgrid.com

Unit-by-Unit Average Monthly Availability - September 2011

Company	Unit	Capacity	Availability %	Forced %	Scheduled %	Ambient %	365-day Rolling Availability %
Aughinish Alumina Ltd	Seal Rock - SK3	85	72.2	22.8	0.0	5.0	81.5
	Seal Rock - SK4	85	90.4	0.4	0.0	9.2	89.7
Bord Gáis	Whitegate – WG1	435	95.8	0.6	0.0	3.6	94.7
Edenderry Power Ltd	Edenderry - ED1	118	97.1	2.9	0.0	--	86.6
	Edenderry – ED3	58	100.0	0.0	0.0	--	98.7
	Edenderry – ED5	58	100.0	0.0	0.0	--	99.3
Endesa	Great Island - GI1	54	100.0	0.0	0.0	--	97.8
	Great Island - GI2	54	90.7	9.3	0.0	--	90.2
	Great Island - GI3	109	82.5	17.5	0.0	--	95.7
	Rhode – RP1	52	99.9	0.1	0.0	--	98.8
	Rhode – RP2	52	100.0	0.0	0.0	--	98.9
	Tarbert – TB1	54	100.0	0.0	0.0	--	99.4
	Tarbert – TB2	54	100.0	0.0	0.0	--	98.6
	Tarbert – TB3	243	100.0	0.0	0.0	--	99.7
	Tarbert – TB4	243	77.9	0.0	22.1	--	96.7
	Tawnaghmore - TP1	52	99.8	0.2	0.0	--	98.0
	Tawnaghmore - TP3	52	94.5	5.5	0.0	--	98.4
ESB Power Generation	Aghada - AD1	258	99.6	0.4	0.0	0.0	97.7
	Aghada - AD2	432	86.4	13.1	0.0	0.5	95.3
	Aghada - AT1	90	98.7	0.2	1.1	0.0	99.3
	Aghada - AT2	90	98.8	1.2	0.0	0.0	97.7
	Aghada - AT4	90	100.0	0.0	0.0	0.0	99.8
	Ardnacrusha - AA1	21	100.0	0.0	0.0	--	98.5
	Ardnacrusha - AA2	22	100.0	0.0	0.0	--	97.6
	Ardnacrusha - AA3	19	97.4	2.6	0.0	--	94.7
	Ardnacrusha - AA4	24	91.5	8.5	0.0	--	97.5
	Erne - ER1	10	99.9	0.1	0.0	--	92.2
	Erne - ER2	10	75.1	0.0	24.9	--	84.0
	Erne - ER3	23	0.0	0.0	100.0	--	68.8
	Erne - ER4	23	100.0	0.0	0.0	--	40.1
	Lee - LE1	15	98.8	0.0	1.2	--	94.7
	Lee - LE2	4	98.8	0.0	1.2	--	93.7
	Lee - LE3	8	95.7	0.0	4.3	--	92.7
	Liffey - LI1	15	71.8	28.2	0.0	--	92.0
	Liffey - LI2	15	71.8	0.0	28.2	--	90.3
	Liffey - LI4	4	100.0	0.0	0.0	--	80.9
	Liffey - LI5	4	100.0	0.0	0.0	--	98.6
	Lough Ree Power - LR4	91	100.0	0.0	0.0	0.0	96.7
	Marina - MRC	123	27.9	9.9	62.2	0.0	68.6
	Moneypoint - MP1	285	99.2	0.8	0.0	0.0	94.2
	Moneypoint - MP2	285	91.9	0.5	7.6	0.0	95.5
	Moneypoint - MP3	285	99.4	0.6	0.0	0.0	94.6
	North Wall - NW5	108	95.9	3.4	0.0	0.7	87.3
	North Wall - NWC	154	0.0	100.0	0.0	0.0	0.0
	Poolbeg - PB4	158	95.8	0.0	0.0	4.2	75.4
	Poolbeg - PB5	154	6.8	0.5	87.5	5.2	79.0
	Poolbeg - PB6	182	45.0	0.0	55.0	0.0	62.1
	Turlough Hill - TH1	73	0.0	100.0	0.0	0.0	0.0
	Turlough Hill - TH2	73	0.0	100.0	0.0	0.0	0.0
	Turlough Hill - TH3	73	0.0	0.0	100.0	0.0	0.0
	Turlough Hill - TH4	73	0.0	0.0	100.0	0.0	0.0
	West Offaly Power - WO4	135	80.5	19.5	0.0	0.0	53.4
Synergen	Dublin Bay - DB1	415	92.2	0.3	0.0	7.5	89.8
Tynagh Energy Ltd	Tynagh – TYC	404	92.6	0.6	0.0	6.8	78.0
Viridian Power & Energy	Huntstown - HN2	408	94.2	0.0	0.0	5.8	90.8
	Huntstown - HNC	344	93.6	0.0	0.0	6.4	89.9
System Total Average Availability			82.7	6.9	8.2	2.2	83.9

Upcoming Scheduled and Known Forced Outages

ISO Week Number		40	41	42	43	44	45	46	47	48	49	50	51	52
Beginning Monday		3-Oct	10-Oct	17-Oct	24-Oct	31-Oct	7-Nov	14-Nov	21-Nov	28-Nov	5-Dec	12-Dec	19-Dec	26-Dec
Station	Unit	October				November				December				
ARDNACRUSHA	AA1													
	AA2													
	AA3													
	AA4													
AGHADA	AD1													
	AD2													
	AT1													
	AT2													
DUBLINBAY	DB1													
	ED1													S
EDENDERRY	ED3													
	ED5													
ERNE	ER1													
	ER2		S											
	ER3	S	S	S	S	S	S	S	S	S	S	S	S	S
	ER4	S												
GREAT ISLAND	GI1													
	GI2													
	GI3													
HUNTSTOWN	HN2													
	HNC													
LEE	LE1													
	LE2													
	LE3													
LIFFEY	LI1													
	LI2													
	LI4													
	LI5													
LOUGH REE	LR4						S							
MONEYPOINT	MP1													
	MP2													
	MP3													
MARINA	MRC	S												
NORTH WALL	NW5													
	NWC	F	F	F	F	F	F	F	F	F	F	F	F	F
POOLBEG	PB4													
	PB5													
	PB6													
RHODE	RP1													
	RP2													
SEAL ROCK	SK3				S	S								
	SK4													
TARBERT	TB1													
	TB2													
	TB3													
	TB4	S	S											
TURLOUGH HILL	TH1	F	F	F	F	F	F	F	F	F	F	F	F	F
	TH2	F	F	F	F	F	F	F	F					
	TH3	S	F	F	F	F	F	F	F	F	F	F	F	F
	TH4	S	F	F	F	F	F	F	F	F	F	F	F	F
TAWNAGHMORE	TP1													
	TP3													
TYNAGH	TYC													
WEST OFFALY	WO4													
WHITEGATE	WG1													

S = Scheduled Outage F = Forced Outage

Notes on 3-Month Outlook:

- (1) Based on information available as of 14th October 3-month Outlook is indicative only and subject to change.
- (2) Some outages of less than 6 days duration are not shown on this outlook (e.g., a weekend outage)

While every effort has been made in the compilation of this report to ensure that the information contained herein is correct we cannot accept any responsibility or liability whatsoever for any damage howsoever caused by reliance on the information presented here