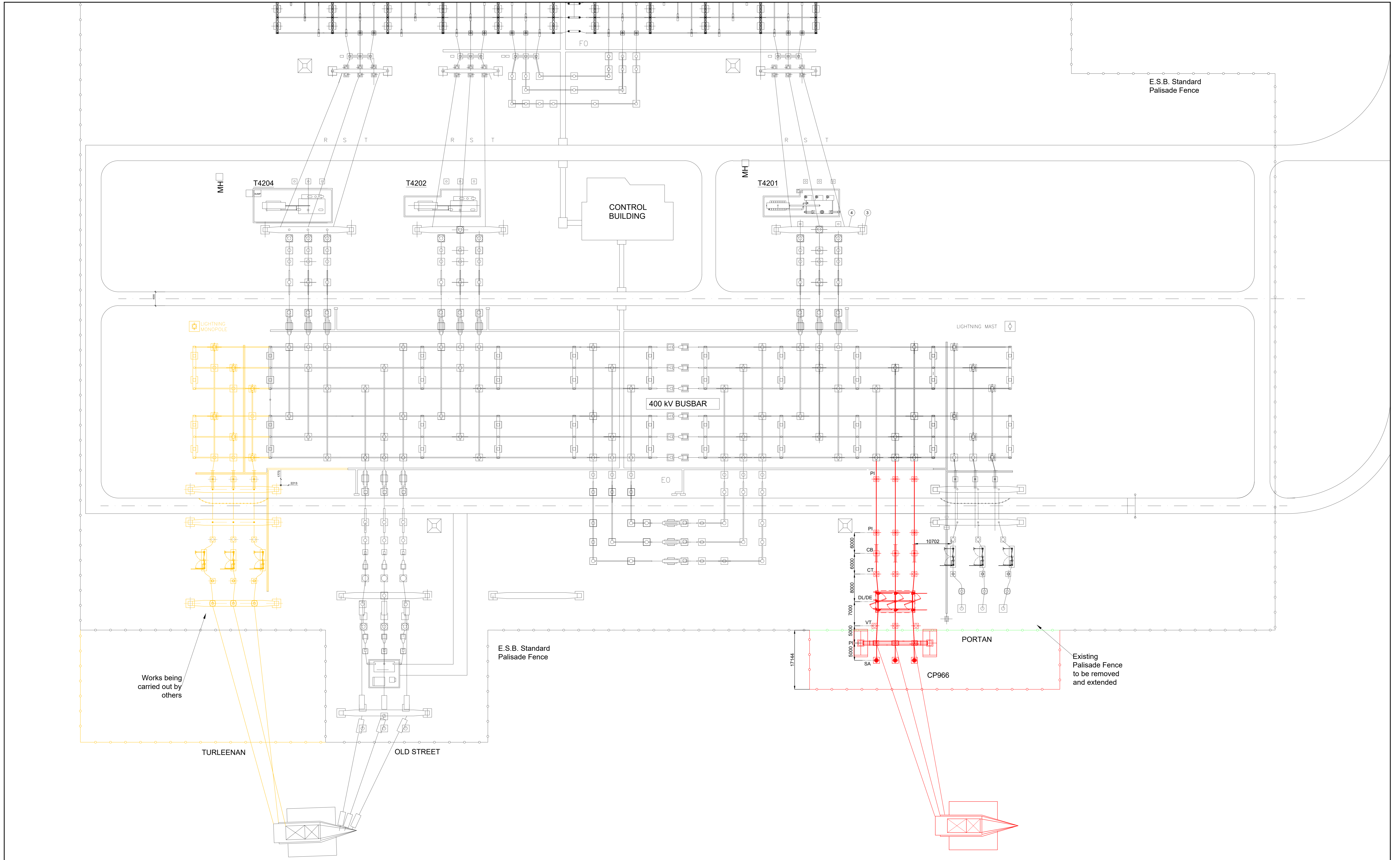


C:\Users\Smith\OneDrive - Jacobs\Engineering\Projects\Deliverables\Drawings\0.2 Current\321084AE-LAY-011 - Woodland 400KV OHL Rev.dwg - 01/04/2020 17:41:22 - 6244-2054 - SMITHN10



Works being carried out by others

NOTES

1. This drawing is for development purposes.

LEGEND

- - Existing
- - New
- - To be removed
- - Work by others
- DL/DE - Line Disconnector/Earth
- VT - Voltage Transformer
- CT - Current Transformer
- PI - Post Insulator
- SH RX - Shunt Reactor
- SA - Surge Arrestor
- CB - Circuit Breaker
- CSE - Cable Sealing End

REFERENCE DRAWINGS

Meath Study Area (MSA) Woodland 400KV Substation Site Layout Plan 6244-2054

| Rev | Date | Purpose of revision | Drawn | Checked | Rev'd | Appr'd |
|-----|----------|---------------------|-------|---------|-------|--------|
| 00 | 03/01/20 | Draw Issue | | | | |

© Copyright 2010 Jacobs U.S. Limited. The copyright and information contained in this document are the property of Jacobs. Use or copying of this document in whole or in part without the written permission of Jacobs constitutes an infringement of copyright. Licensor: This drawing has been prepared on behalf of, and for the exclusive use of Jacobs Client, and is subject to the terms and conditions of the license agreement between Jacobs and the Client. Jacobs accepts no liability or responsibility whatsoever for, or in respect of, any use of, or reliance upon, this drawing by any third party.

JACOBS

95 Seawall St. Glasgow, G2 7JX
Tel: +44(0)141 243 8000 Fax: +44(0)141 205 3109
www.jacobs.com



Project: EIRGRID CP966

Drawing title: WOODLAND 400KV CP966 400KV OHL OPTION

Drawing status: PRELIMINARY

| Scale | 1:350 @ A0 | DO NOT SCALE |
|------------|------------------|--------------|
| Jacobs No. | 321084AE-LAY-009 | Rev |
| Client no. | | 00 |

Drawing number: 321084AE-LAY-011