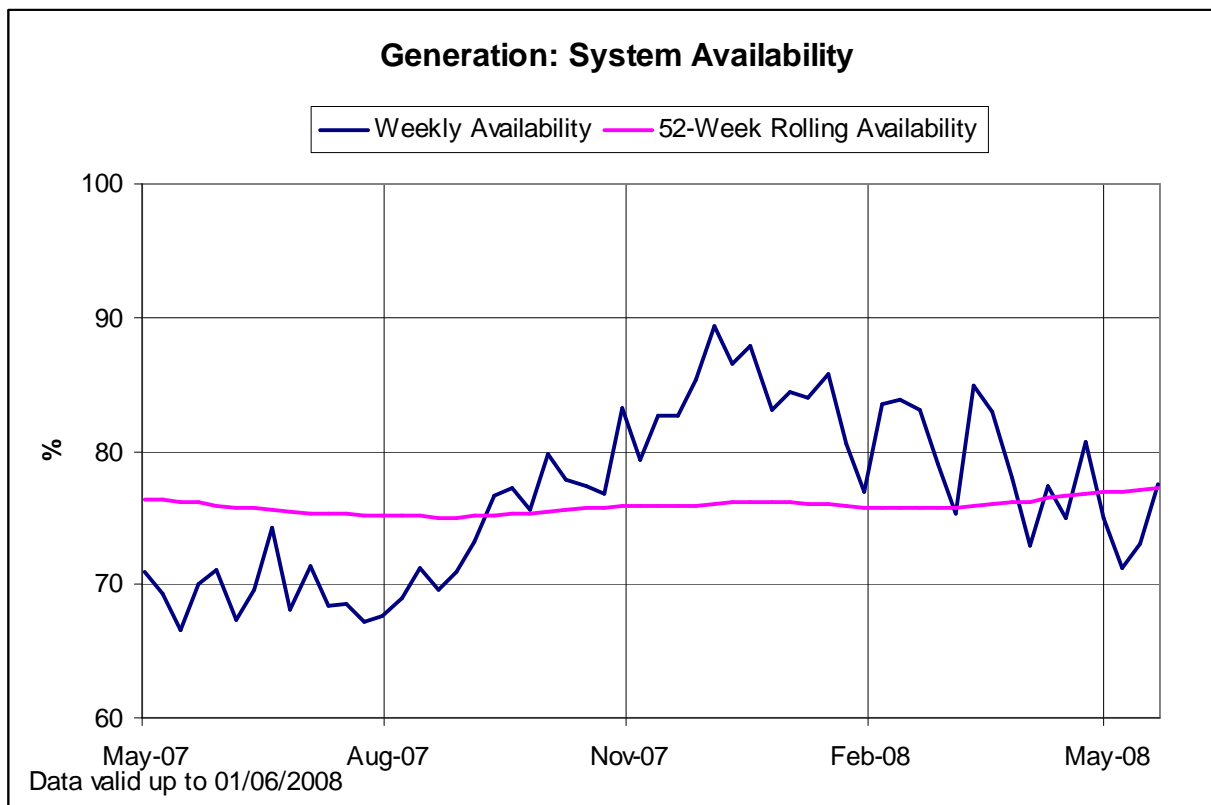


## EirGrid Monthly Availability Report – May 2008

This report, for May 2008, details the availability performance of the centrally-dispatched generation units on the power system and includes an outlook for plant availability over the period from June to August 2008.

### Key Points:

- The forced outage rate increased slightly from 9.7% in April to 10.9% in May (this is equivalent to a forced outage rate of 6.1% when the long-term outages at Poolbeg Unit 3 and Turlough Hill Unit 1 are excluded).
- The monthly system availability for May was 75.5%. The main outages, in addition to the long term outages noted above, were the forced outage of Aghada AT2 and the scheduled outages at Aghada AD1, Moneypoint Unit 2, Poolbeg Unit 2 and Turlough Hill Units 2, 3 and 4.
- The rolling 52-week availability increased marginally from 77% to 77.5%.



### Definitions

**Availability:** the capacity-weighted percentage of the time from 00:00 Sunday 27<sup>th</sup> April to 00:00 Sunday 1<sup>st</sup> June that generators were available.

**Forced:** outages where generators are unavailable due to unforeseen/unplanned outages.

**Scheduled:** outages where generators are unavailable due to planned reasons, e.g., for maintenance.

**Ambient** (*seasonal derating*): difference between the **Maximum Capacity** of a generator and the **Dependable Capacity** over a specified period of time.

**Maximum Capacity:** the maximum capacity that a unit can sustain over a specified period of time.

**Dependable Capacity:** the capacity of a unit, when modified for ambient conditions over a specified period of time.

**52-week Rolling Availability:** the average of the unit's **Availability** over the most recent 52 weeks (i.e., past year)

### HOW TO CONTACT US

#### General Queries

Tel: +353 1 702 6642

Email: [info@eirgrid.com](mailto:info@eirgrid.com)

#### Power System Operation

Doireann Barry

Tel: +353 1 702 6039

Email: [doireann.barry@eirgrid.com](mailto:doireann.barry@eirgrid.com)

[www.eirgrid.com](http://www.eirgrid.com)

Unit-by-Unit Average Monthly Availability - May 2008							
Company	Unit	Capacity*	Availability %	Forced %	Scheduled %	Ambient %	52wk Rolling Availability %
Aughinish Alumina Ltd	Seal Rock - SK3	80	98.8	0.4	0.0	0.8	95.7
	Seal Rock - SK4	80	97.2	1.8	0.0	1.0	90.5
Edenderry Power Ltd	Edenderry - ED1	118	97.9	2.1	0.0	0.0	83.9
ESB Power Generation	Ardnacrusha - AA1	21	100.0	0.0	0.0	--	98.0
	Ardnacrusha - AA2	22	99.7	0.3	0.0	--	97.8
	Ardnacrusha - AA3	19	96.0	0.0	4.0	--	94.2
	Ardnacrusha - AA4	24	96.0	0.0	4.0	--	97.0
	Aghada - AD1	257	47.1	10.1	42.8	0.0	83.9
	Aghada - AT1	90	99.8	0.2	0.0	0.0	87.1
	Aghada - AT2	90	38.9	61.1	0.0	0.0	3.7
	Aghada - AT4	90	99.6	0.4	0.0	0.0	61.9
	Aghada - AP5**	--	--	--	--	--	--
	Erne - ER1	10	97.1	0.0	2.9	--	97.9
	Erne - ER2	10	97.0	0.1	2.9	--	94.0
	Erne - ER3	23	100.0	0.0	0.0	--	97.3
	Erne - ER4	23	49.6	0.0	50.4	--	90.3
	Great Island - GI1	54	97.5	2.5	0.0	--	40.9
	Great Island - GI2	54	91.2	8.8	0.0	--	42.5
	Great Island - GI3	109	67.7	11.9	20.5	--	67.9
	Lee - LE1	15	99.9	0.1	0.0	--	93.6
	Lee - LE2	4	56.1	0.2	43.6	--	93.0
	Lee - LE3	8	99.6	0.4	0.0	--	95.6
	Liffey - LI1	15	98.6	1.4	0.0	--	98.7
	Liffey - LI2	15	95.9	4.1	0.0	--	97.6
	Liffey - LI4	4	100.0	0.0	0.0	--	99.1
	Liffey - LI5	4	100.0	0.0	0.0	--	100.0
	Lough Ree Power - LR4	90	97.8	0.3	1.9	--	64.9
	Moneypoint - MP1	285	63.7	35.7	0.6	--	66.2
	Moneypoint - MP2	285	0.0	0.0	100.0	--	76.8
	Moneypoint - MP3	285	98.7	1.3	0.0	--	80.7
	Marina - MRC	123	39.7	58.4	0.2	1.7	75.7
	North Wall - NWC	154	89.1	10.3	0.0	0.6	59.1
	North Wall - NW5	109	91.8	8.2	0.0	0.0	77.9
	Poolbeg - PB1	115	77.5	9.7	12.9	--	86.4
	Poolbeg - PB2	115	0.0	0.0	100.0	--	75.0
	Poolbeg - PB3	242	0.0	100.0	0.0	--	0.0
	Poolbeg - PB4	154	95.2	0.0	0.0	4.8	90.9
	Poolbeg - PB5	150	88.7	7.9	0.0	3.4	92.5
	Poolbeg - PB6	173	94.4	4.3	0.0	1.3	93.2
	Rhode - RP1	52	93.8	0.0	6.2	--	97.7
	Rhode - RP2	52	94.8	0.0	5.2	--	97.1
	Tarbert - TB1	54	79.2	0.0	20.8	--	97.4
	Tarbert - TB2	54	79.2	0.0	20.8	--	96.7
	Tarbert - TB3	243	90.8	9.1	0.1	--	68.0
	Tarbert - TB4	243	99.8	0.2	0.0	--	90.6
	Turlough Hill - TH1	73	0.0	0.0	100.0	--	0.0
	Turlough Hill - TH2	73	58.5	0.1	41.4	--	87.2
	Turlough Hill - TH3	73	58.6	0.0	41.4	--	90.4
	Turlough Hill - TH4	73	58.2	0.3	41.4	--	91.3
	Tawnaghmore - TP1	52	100.0	0.0	0.0	--	92.2
	West Offaly Power - WO4	137	88.2	11.8	0.0	--	60.5
Synergen	Dublin Bay - DB1	415	92.8	0.5	2.5	4.1	88.2
Tynagh Energy Ltd	Tynagh - TYC	404	83.7	10.2	0.0	6.1	89.7
Viridian Power & Energy	Huntstown - HNC	344	96.4	0.0	0.0	3.6	93.3
	Huntstown - HN2	408	96.7	0.0	0.0	3.3	96.5
System Total Average Availability			75.5	10.9	12.3	1.3	77.5

\*Exported MW values as per Generation Adequacy Report **2008-2014**. Note some of the availability statistics are currently based on generated MW values which may give rise to some very small variances.

\*\* Aghada AP5 was decommissioned at the end of March and is being moved to Tawnaghmore.

3-Month Outlook for Generation Scheduled and Known Forced Outages														
ISO Week Number		23	24	25	26	27	28	29	30	31	32	33	34	35
Beginning Monday		02-Jun	09-Jun	16-Jun	23-Jun	30-Jun	07-Jul	14-Jul	21-Jul	28-Jul	04-Aug	11-Aug	18-Aug	25-Aug
Station	Unit	June				July					August			
ARDNACRUSHA	AA1		S	S										
	AA2	S												
	AA3					S								
	AA4													
AGHADA	AD1	S	S	S	S	S	S	S	S	S	S	S	S	S
	AP5													
	AT1													
	AT2													
	AT4													
DUBLINBAY	DB1													
EDENDERRY	ED1							S	S	S	S			
ERNE	ER1						S	S	S					
	ER2			S	S	S								
	ER3	S	S											
	ER4	S												
GREAT ISLAND	GI1													
	GI2													
	GI3													
HUNTSTOWN	HN2	S	S											
	HNC													
LEE	LE1		S	S	S									
	LE2													
	LE3						S	S	S	S				
LIFFEY	LI1		S											
	LI2													
	LI4													
	LI5													
LOUGH REE	LR4													
MONEYPPOINT	MP1												S	
	MP2	S	S	S	S	S	S	R <sup>3</sup>	R	R	R			
	MP3									S				
MARINA	MRC													
NORTH WALL	NW5					S	S	S	S	S	S	S		
	NWC													
POOLBEG	PB1													
	PB2	S	S	S										
	PB3	F	F	F	F	F	F	F	F	F	F	F	F	F
	PB4								S					
	PB5													
	PB6								(4)					
RHODE	RP1													
	RP2													
SEAL ROCK	SK3											S	S	S
	SK4													
TARBERT	TB1													
	TB2													
	TB3								S	S				
	TB4													S
TURLOUGH HILL	TH1 <sup>5</sup>	S	S	S	S	S	S	S	S	S	S	S	S	S
	TH2													
	TH3													
	TH4													
TAWNAGHMORE	TP1													
TYNAGH	TYC				S									
WEST OFFALY	WO4							S	S	S	S	S	S	

S = Scheduled Outage    F = Forced Outage    R = Restricted Output

#### Notes on 3-Month Outlook:

- (1) Based on information available as of 5<sup>th</sup> June; 3-month Outlook is indicative only and subject to change; Includes only forced outages known at time of publication
- (2) Some outages of less than 6 days duration are not shown on this outlook (e.g. a weekend outage)
- (3) Moneypoint will have a restricted output in the period after the outage while the FGD is being commissioned.
- (4) Poolbeg ST16 will be at half capacity during the outage of Poolbeg CG14
- (5) As per agreement with Turlough Hill, 6 months (from April to October) of Turlough Hill Unit 1's outage will be scheduled rather than forced.

*While every effort has been made in the compilation of this report to ensure that the information contained herein is correct we cannot accept any responsibility or liability whatsoever for any damage howsoever caused by reliance on the information presented here*