

110kV STATION MINIMUM ALL YEAR ROUND RATINGS		
	NOMINAL RATING	SHORT CIRCUIT RATING
BUSBAR	2500A	31.5kA
FEEDER BAY	1250A	31.5kA
TRANSFORMER BAY	1250A	31.5kA
COUPLER BAY	2500A	31.5kA
SECTIONALISER BAY	2500A	31.5kA

LEGEND	
LT	LINE TRAP
SA	SURGE ARRESTER
VT	VOLTAGE TRANSFORMER
CT	CURRENT TRANSFORMER

IEC DESIGNATOR (ESB DESIGNATOR)	DESCRIPTION
QA1(CB)	CIRCUIT BREAKER
QB1(DA) QB2(DB)	BUSBAR DISCONNECT
QB9(DL)	LINE DISCONNECT
QB9(DT)	TRAF0 DISCONNECT
QC9(DE) QC9(DEM4)	ISOLATABLE HIGH SPEED EARTH DISCONNECT
QC1/QC2/QC3 (DEM1/DEM2/DEM3)	MAINTENANCE EARTH SWITCH
QC11/QC21(DEA1/DEB1) QC12/QC22(DEA2/DEB2)	ISOLATABLE HIGH SPEED EARTH SWITCH
QB11/QB12/QB21/QB22 (SA1-2 SA1/SA1-2 SA2/SB1-2 SB1/SB1-2 SB2)	SECTIONALISER DISCONNECT
QA1(SA1-2 CB, SB1-2 CB)	SECTIONALISER CIRCUIT BREAKER
QB1(K1-DA, K2-DA) QB2(K1-DB, K2-DB)	WING COUPLER BUSBAR DISCONNECT
QA1(K1-CB, K2-CB)	WING COUPLER CIRCUIT BREAKERS

KEY	
■	NEW
■	FUTURE
■	SPARE (FULLY EQUIPED)
■	CUSTOMER
	MULTICORE CT
	(OHL) OVER HEAD LINE
	CABLE SEALING END
	CABLE
	NEUTRAL EARTH SWITCH

NOTE 1:
THIS SLD IS AN ELECTRICAL REPRESENTATION OF THE STATION. FOR PHYSICAL LAYOUT REQUIREMENTS REFER TO EIRGRID GENERAL FUNCTIONAL SPECIFICATION XDS-GFS-00-001.

NOTE 2:
SCS TBC.
GIS STATION.

NOTE 3:
REFER TO PROJECT SPECIFIC PROTECTION SPEC FOR:
1. SPECIFIC BAY CT & VT RATINGS, BURDEN & ACCURACY CLASS REQUIREMENTS.
2. TELEPROTECTION CHANNEL REQUIREMENTS
3. Tx NEUTRAL EARTH REQUIREMENTS

NOTE 4:
INSTRUMENT TRANSFORMER CORES & WINDINGS ARE NOT TO BE SHARED ACROSS THE PROPERTY BOUNDARY FENCE WITH THE EXCEPTION OF A CT CORE FOR DIFFERENTIAL PROTECTION AND A VT WINDING FOR VOLTAGE SYNCHRONISATION WHERE APPLICABLE.

NOTE 5:
REQUIREMENT AND POSITION OF SA/CT/VT IN IPP COMPOUND TO BE DETERMINED BY IPP. CUSTOMER TO DEMONSTRATE THAT TSO CABLE IS SUITABLY PROTECTED FROM OVER VOLTAGES.

NOTE 6:
GIS INTERFACE TBC (AIS OR CABLE).

NOTE 7:
CUSTOMER EQUIPMENT TBC.

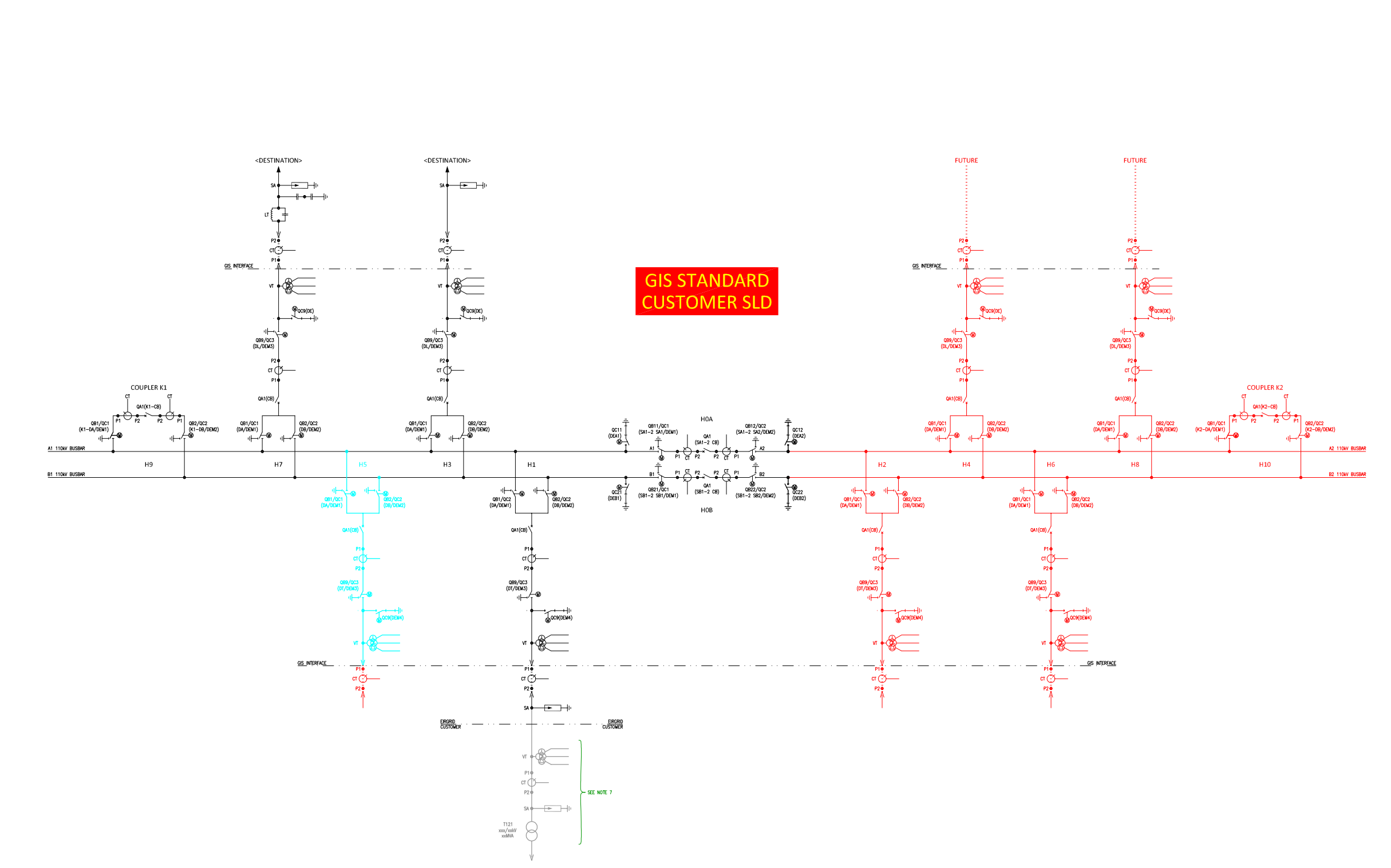
NOTE 8:
OWNERSHIP BOUNDARIES TBC.

NOTE 9:
REFER TO THE PROTECTION SPEC FOR SINGLE POLE CIRCUIT BREAKER CONTROL REQUIREMENTS.

NOTE 10:
SLDs SUBMITTED FOR DETAILED DESIGN SHALL INCLUDE ALL HV PLANT RATINGS AND PROTECTION RELAY INPUTS TO INSTRUMENT TRANSFORMERS.

NOTE 11:
ALL SA REQUIREMENTS TO BE CONFIRMED BASED ON INSULATION COORDINATION STUDY.

NOTE 12 (AS ILLUSTRATED ON DRAWING):
HIGHER SHORT CIRCUIT RATING MAY BE REQUIRED DEPENDING ON LOCATION OF THE SUBSTATION CONNECTION.



01	SLD UPDATED IN LINE WITH LATEST LAYOUT AND PROTECTION DETAILS REMOVED	DA	NK	CF	25/10/2019
00	FIRST ISSUE	JB	KF	PM	29/06/2015
REV	DESC	DRAWN	CHECKED	APPROVED	DATE

EIRGRID EirGrid plc
The Oval, 160 Shelbourne Road,
Ballsbridge, Dublin 4, Ireland

Telephone: +353 1 677 1700
Fax: +353 1 661 5375
Email: info@eirgrid.com
Web: www.eirgrid.com

COPYRIGHT © EirGrid plc
All rights reserved. No part of this work may be modified or reproduced or copied in any form or by any means – graphic, electronic or mechanical, including photocopying, recording, taping or information and retrieval system, or used for any purpose other than its designated purpose, without the written permission of EirGrid plc

PROJECT		STANDARD 110kV GIS CUSTOMER STATION	
DRAWING TITLE		STANDARD CUSTOMER C-TYPE STATION (EXTENDABLE TO RING STATION) 110kV SINGLE LINE DIAGRAM	
No of Shts	1	SIZE	A3
DRAWING NUMBER	XDN-SLD-STND-H-006	SCALE	N/A
SHEET	001	REV	01