

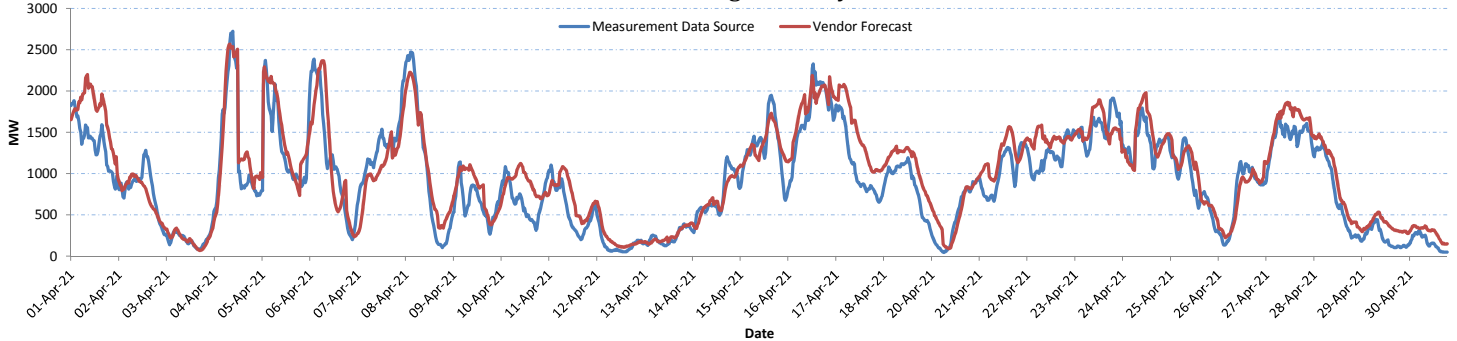
# Monthly Wind Forecast Accuracy Report

## April 2021

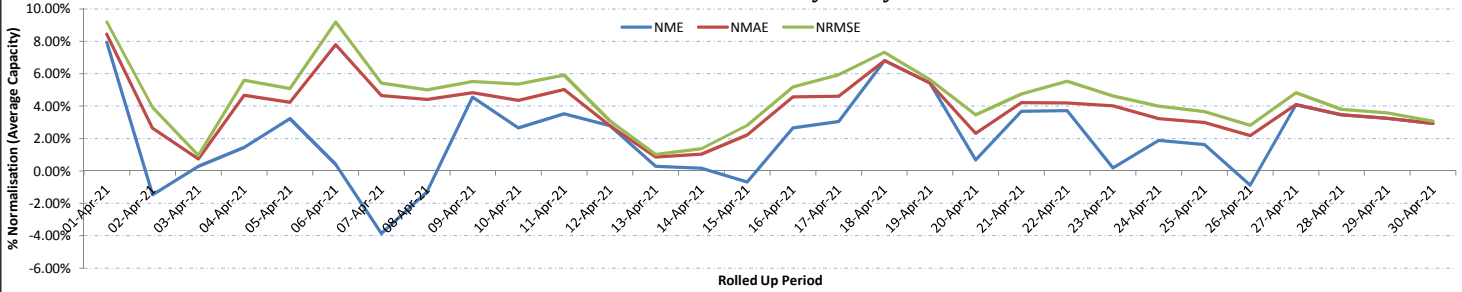


### All-Island Wind Generation and Forecast Accuracy for Primary Vendor

Wind Forecasting Accuracy Trend

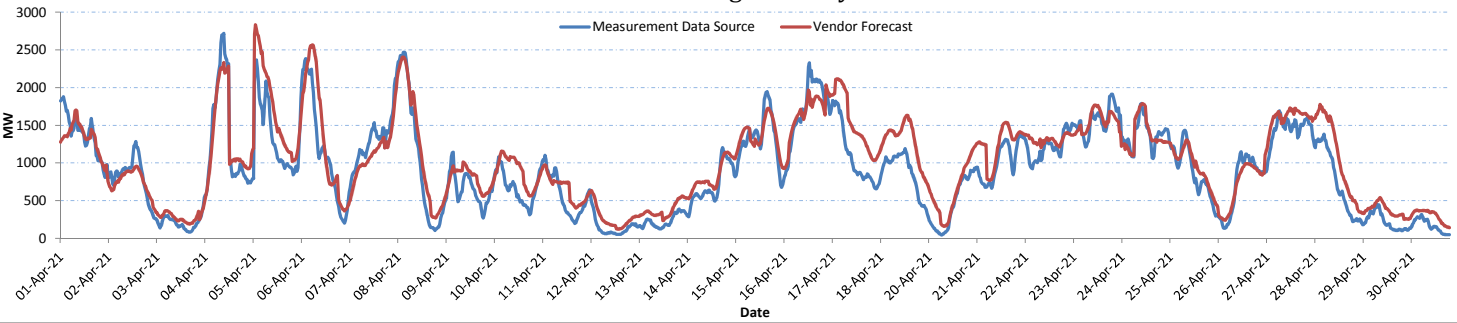


Wind Forecast Accuracy Analysis

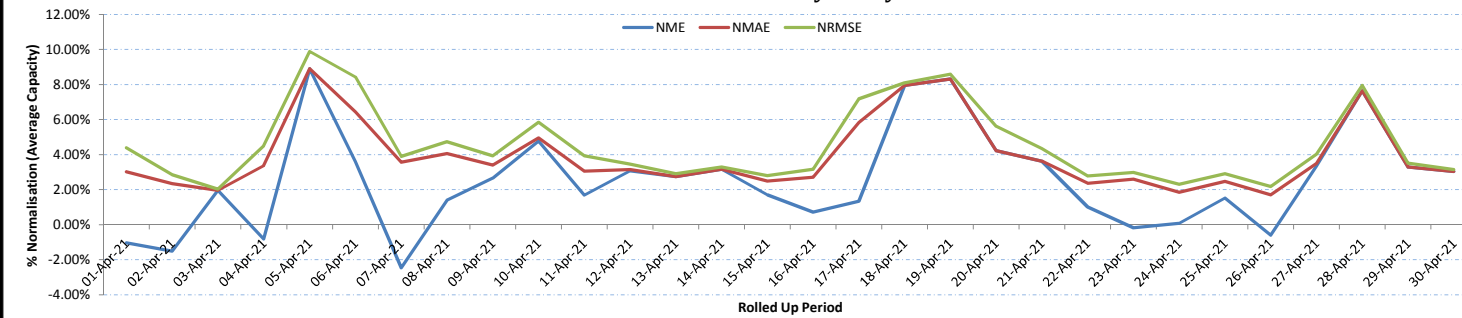


### All-Island Wind Generation and Forecast Accuracy for Secondary Vendor

Wind Forecasting Accuracy Trend



Wind Forecast Accuracy Analysis



**Notes:**

Primary and Secondary Vendors provide EirGrid with 2 separate Wind Power Forecasts  
 System Data is based on 30-minute average SCADA MW data  
 NME is Normalised Mean Error, NMAE is Normalised Mean Absolute Error and NRMSE is Normalised Root Mean Squared Error  
 All statistics reported are normalised to the average total system installed wind capacity for the period analysed